

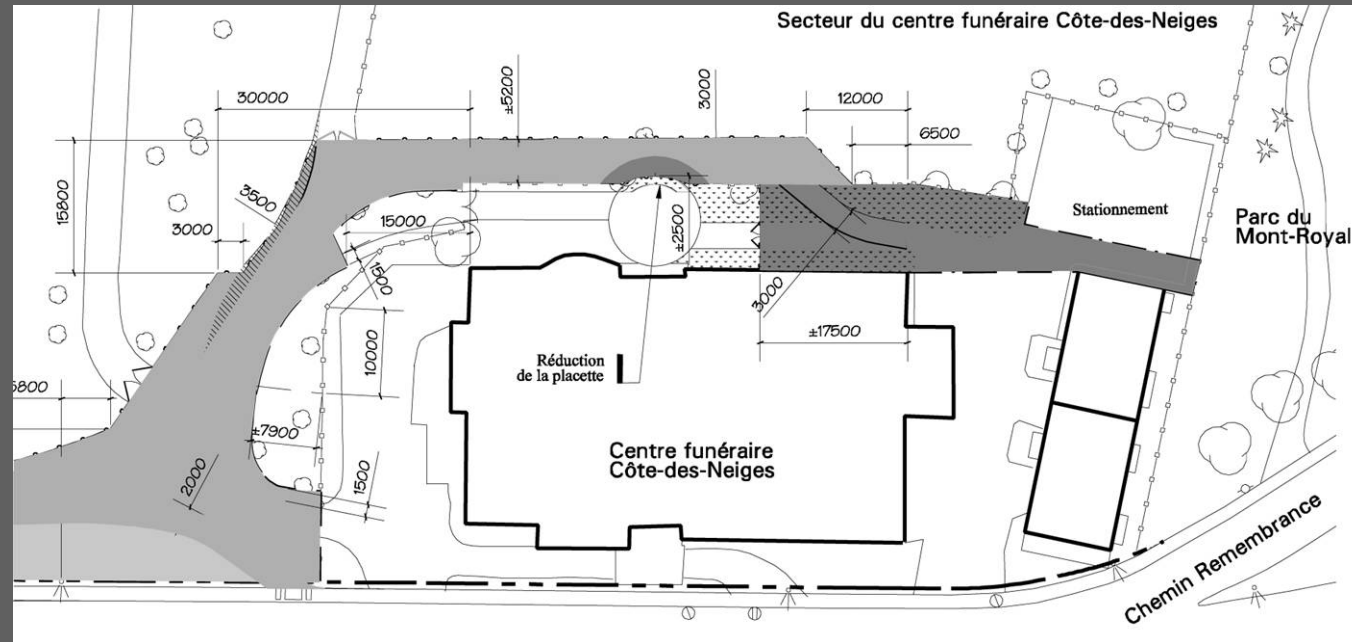
An aerial photograph of a city, likely Montreal, showing a large mountain in the foreground. The mountain is covered in snow and has a large university campus (UdeM) and a residential area (NDDN) on it. The city skyline is visible in the background, with a large body of water (St. Lawrence River) and a bridge (Jacques-Cartier Bridge) in the distance. The sky is clear and blue.

Le chemin de ceinture du Mont-Royal

Faciliter la découverte des patrimoines de la montagne
Document supplémentaire : Servitudes avec UdeM et
cimetière NDDN

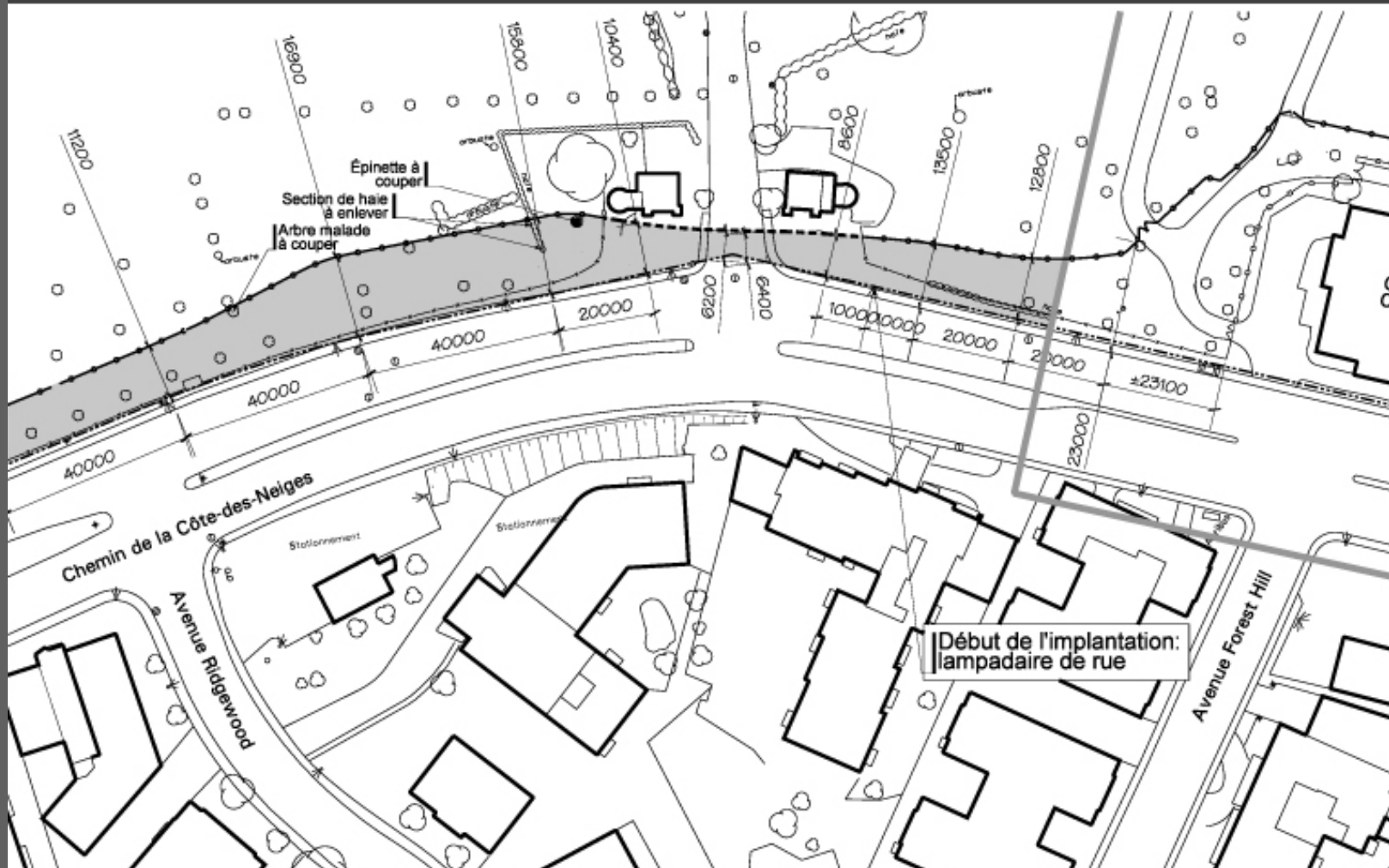
3a

Centre funéraire Côte-des-Neiges



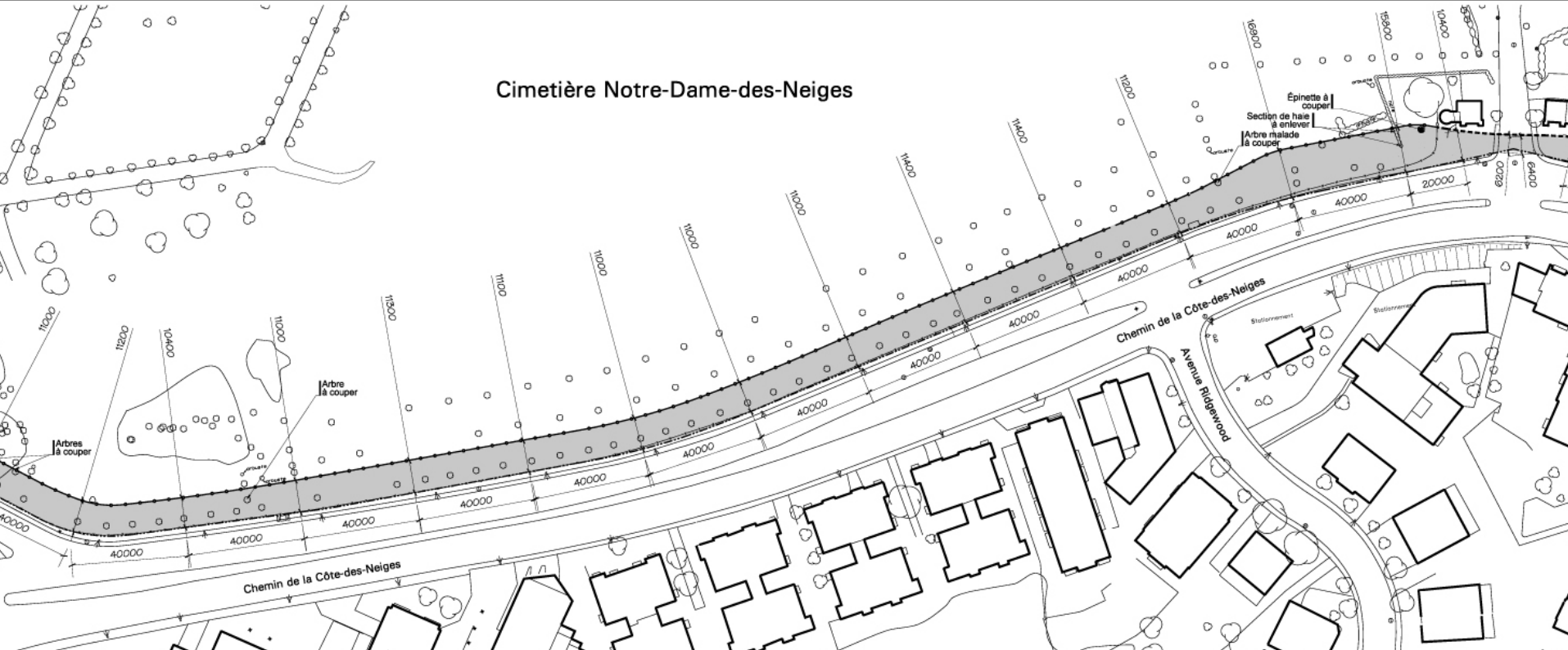
3b

Cimetière Notre-Dame-des-Neiges



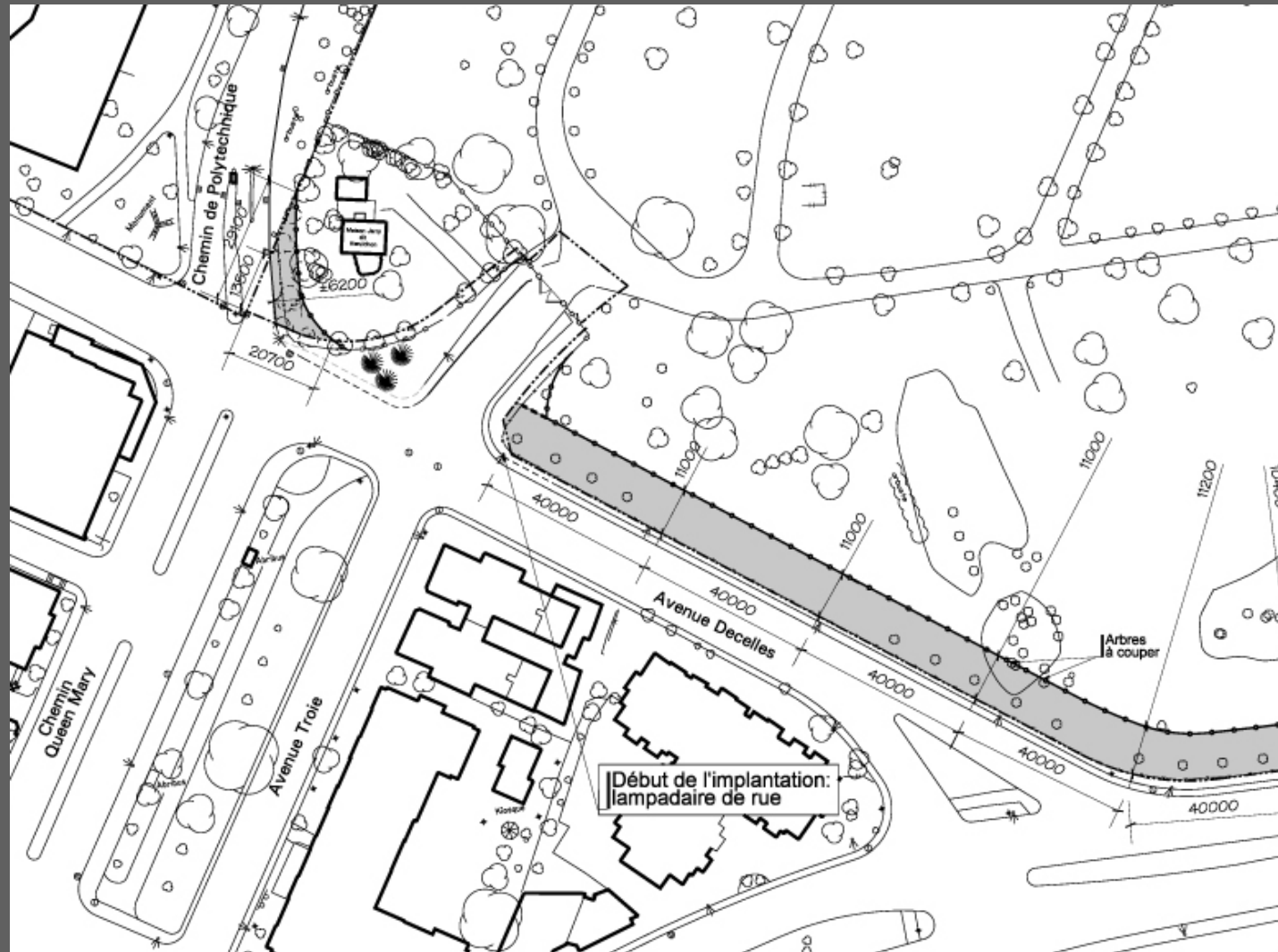
3a

Centre funéraire Côte-des-Neiges



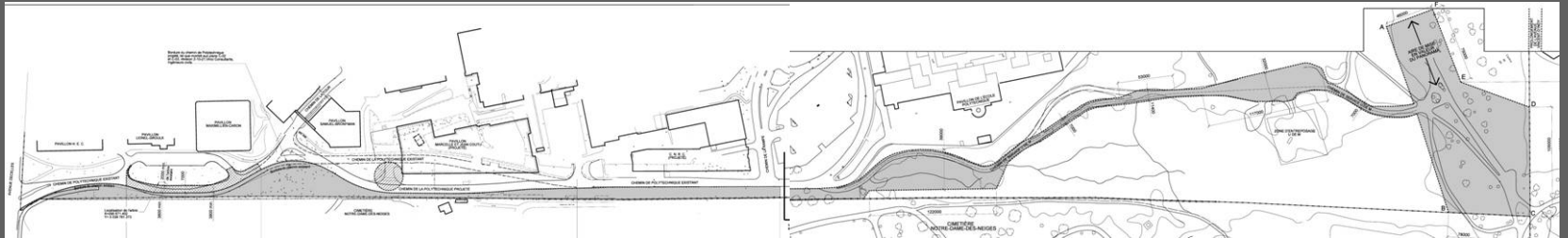
3a

Centre funéraire Côte-des-Neiges



4

Université de Montréal



Bordure du chemin de Polytechnique
projeté, tel que montré aux plans C-02
et C-03, révision 2-10-21, Vinc. Consultants,
Ingénieurs s.r.l.

